

First Floor, Embankment, Rockwood Parade, Sligo, Co. Sligo, Ireland,

Commercial |

To Let/For Lease | €0

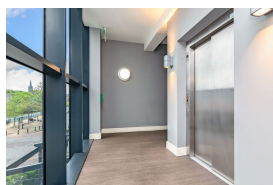


Excellent opportunity to lease a First Floor office in this incredible riverside location in Sligo town centre. This building enjoys street frontage onto Thomas Street with some high profile occupants already in place.

This is an excellent opportunity to lease this newly refurbished modern office space. The space enjoys exceptional exposure with glass street frontage onto two of the Town's major streets and has incredible river views.

The property has the added benefit of parking spaces in a generous car park to the rear accessed from Rockwood Parade (up to approximately 3 spaces available). There is also access to a large covered bicycle parking area which is located within the property's car park.

Lift access is in place to all floors in the building. This unit has its own shower facilities.



Location

Embankment is a newly refurbished complex located in the heart of Sligo town. Set fronting onto Castle Street, Thomas Street Rockwood Parade, it enjoys a prime position within Sligo's business hub. Embankment has a number of high profile occupants including Damien Tansey Solicitors, Sligo County Council, Abbott Laboratories Flipside Restaurant. Situated along the Garavogue River, Rockwood Parade has become one of



Sligo Townâ€™s busiest business districts with a wide variety of successful businesses trading on the street. There are many retail shops, large small, restaurants and offices. It is an ideal location with excellent public car parking nearby situated in the Abbey Street car park. Sligo itself is easily accessible being within 45 mins of Ireland International Airport Knock, also enjoys excellent public train bus services. Sligo is approx. 210km from Dublin, 200km from Belfast 140km from Galway.

Size:

540 sqM - 5813 sqFtSqm

Garden

Generous car parking facilities covered bicycle parking area.

Directions

In Sligo town centre. Eircode: F91 A2RC

